



Jordan fishwick

Buxton Road Disley Stockport



**Buxton Road Disley Stockport SK12
2EY**

£140,000



The Property

Located close to the centre of Disley Village and ideal for all its amenities, a two bedroom first floor apartment. Situated within a small complex of retirement apartments for the over 60's and set in well maintained communal gardens together with a parking area. The property is well presented throughout and ready to walk into. Offered for sale with NO ONWARD CHAIN, Comprising: private ground floor entrance with chair lift, first floor landing, spacious lounge with recessed window, re-fitted kitchen, two bedrooms and a shower room. Electric heating and double glazing. Viewing recommended.



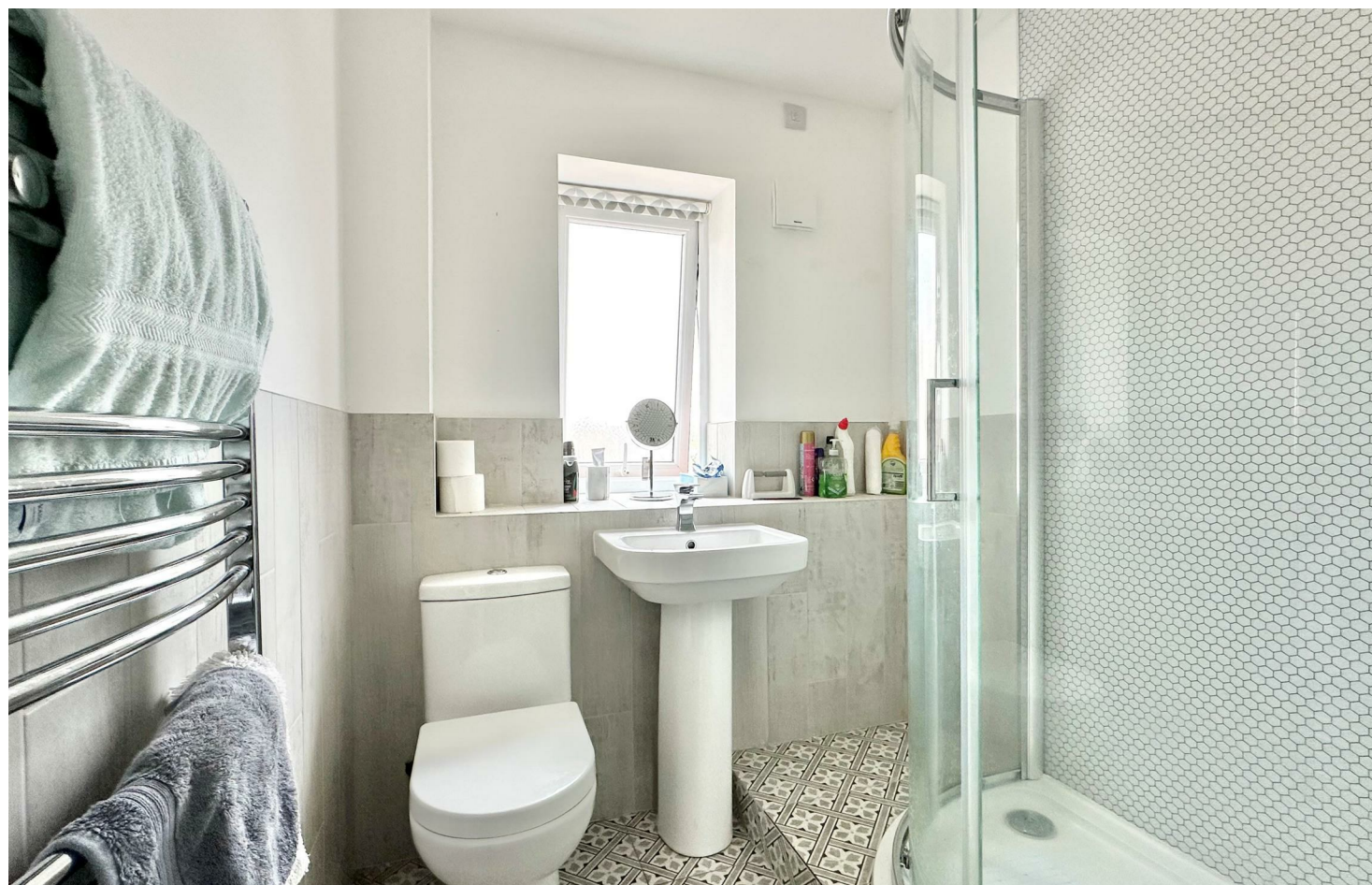
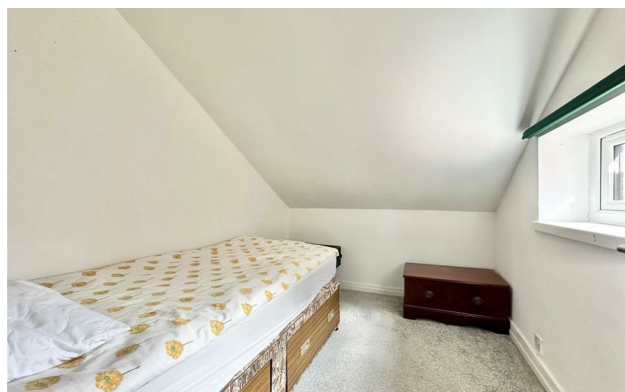
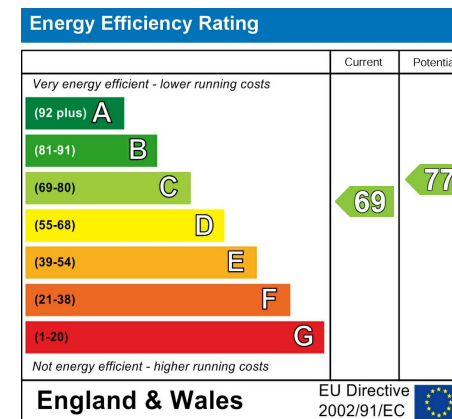
- Desirable and Convenient Location For Disley Village
- Two Bedroom First Floor Flat
- Small Complex for the Over 60's
- Parking Area and Communal Grounds
- Well Presented Throughout
- No Chain
- Pvc Double Glazing and Electric Heating

Postcode SK12 2EY

EPC Rating C

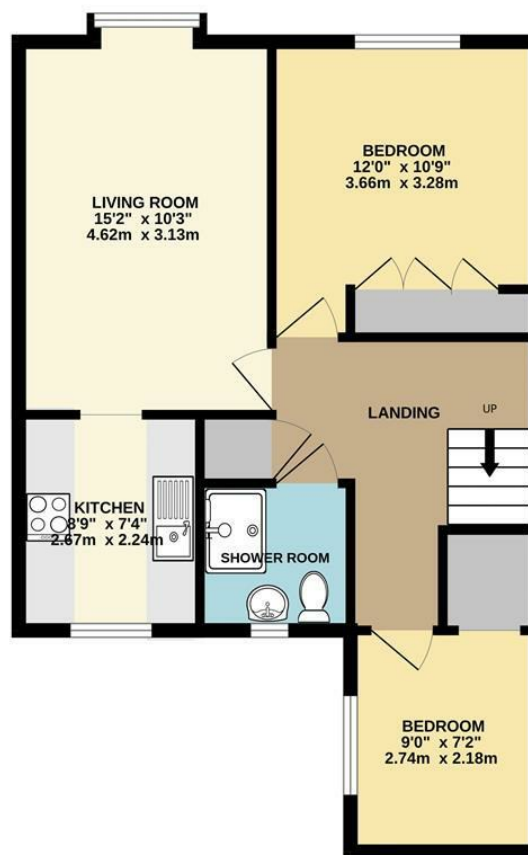
Local Authority Cheshire East

Council Tax B



GROUND FLOOR

FIRST FLOOR



Whilst every attempt has been made to ensure the accuracy of the floorplan contained here, measurements of doors, windows, rooms and any other items are approximate and no responsibility is taken for any error, omission or mis-statement. This plan is for illustrative purposes only and should be used as such by any prospective purchaser. The services, systems and appliances shown have not been tested and no guarantee as to their operability or efficiency can be given.
Made with Metropix ©2026



These particulars are believed to be accurate but they are not guaranteed and do not form a contract. Neither Jordan Fishwick nor the vendor or lessor accept any responsibility in respect of these particulars, which are not intended to be statements or representations of fact and any intending purchaser or lessee must satisfy himself by inspection or otherwise as to the correctness of each of the statements contained in these particulars. Any floorplans on this brochure are for illustrative purposes only and are not necessarily to scale.

Offices at: Chorlton, Didsbury, Disley, Hale, Glossop, Macclesfield, Manchester Deansgate, Manchester Whitworth Street, New Mills, Sale, Wilmslow and Withington

14 Market St, Disley, Cheshire, Stockport SK12 2AA

01663 767878

disley@jordanfishwick.co.uk
www.jordanfishwick.co.uk